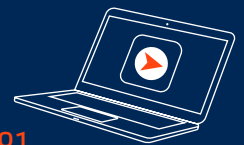




OMNICOMM SOLUTIONS FOR RAILROADS

In a growing market with big ambitions, there are plenty of challenges. Railway operators who want to flourish must deal with a diverse set of issues – from alternative freight sources, increased competition and volatile fuel costs to high stock and operating costs and environmental obligations. Success depends on operators' willingness to embrace digital transformation to achieve meaningful efficiency gains.

OMNICOMM provides complete fuel monitoring and fleet management solutions to give rail operators maximum control over their valuable assets, including highly accurate fuel-level sensors, on-board terminals, indicator displays and OMNICOMM Online, the cloud-based fleet management platform with advanced fuel analytics.



01
**Omnicomm
Online**



02
**Omnicomm
on-board terminal**



03
**Omnicomm LLS
fuel-level sensor**

POWERFUL BENEFITS



Actionable data

OMNICOMM components provide detailed, actionable data to help operators accurately assess fuel levels, monitor assets in real time and manage labor and fuel costs. MODBUS protocol support enables connection to non-OMNICOMM sensors to collect data such as on-board or coolant temperature, passenger flow, etc.



Durability

Highly reliable and durable on-board terminals are unaffected by difficult conditions such as vibration, fluctuations in temperature, humidity, etc. Fuel-level sensors work reliably in extreme temperatures and come with a five-year warranty.

99,2%

Precision

High-precision fuel-level sensors measure fuel levels and provide fuel data with over 99.2% accuracy. Developed in-house by specialized R&D telemetry experts, our best-in-class data smoothing/filtration algorithm filters out 'noise' and delivers meaningful data. OMNICOMM Online provides the most advanced fuel analytics on the market.



Real-time monitoring

Monitor fuel volumes at all times, detect fuel wastage or theft and ensure uninterrupted operations (no dry panes) with notifications when the fuel level dips below a specified threshold. Access real-time data about key parameters such as speed and temperature to improve the safety and reliability of railroad operations.



01
**Omicomm
Online**



02
**Omicomm
on-board terminal**



03
**Omicomm LLS
fuel-level sensor**



Flexibility

Components integrate with third-party software and hardware, and are available as stand-alone products or as a complete fleet management solution.



Partner support

OMNICOMM offers lifetime partner support, high levels of customer support, and strong technical training resources. OMNICOMM is a market-proven expert in fuel management that works with partners to provide complex solutions that support a wide variety of customers, enabling them to save millions of dollars annually.

SOLUTION COMPONENTS



OMNICOMM Online:

A cloud-based SaaS fuel and fleet management solution that includes instant alerts for events, for example safety issues, real-time fuel-level monitoring and access to historical and real-time information any time operators are online – including on mobile.



OMNICOMM on-board terminal:

Compatible with both GPS and GLONASS, OMNICOMM offers a range of on-board terminals for different scenarios, including the OMNICOMM OKO video surveillance-enabled option. On-board terminals collect data from various sensors and the vehicle's on-board computer and send it to the fleet management system for processing.



OMNICOMM LLS fuel-level sensor:

The industry's most reliable high-precision capacitive fuel-level sensors, including explosion-proof option. OMNICOMM sensors have the highest possible ingress protection rating, enabling operation in the most extreme conditions.

MEASURE KEY PARAMETERS:

- Fuel consumption
- Fuel levels
- Fuel density
- Speed
- Ignition status
- Coordinates
- Harsh braking and acceleration
- Engine temperature
- On-board voltage
- Power supply connection
- Equipment working modes

Want to see how OMNICOMM can work for you?
SCHEDULE A DEMO WITH ONE OF OUR LOCAL PARTNERS TODAY.

www.omnicomm-world.com
info@omnicomm-world.com