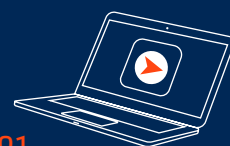




## OMNICOMM SOLUTIONS FOR TELECOM OPERATORS

Telecommunications technology underpins the development of countless emerging innovations, from IoT appliances to autonomous vehicles. With the 5G revolution on the horizon, mobile network operators (MNOs) are in a market with great potential. MNOs are increasingly offering advanced, flexible fleet management solutions for connected vehicles as a quality value-added service.

MNOs can give customers a competitive edge with OMNICOMM's complete fuel monitoring and fleet management solutions, including precision fuel-level sensors, on-board terminals for heavy and light vehicles, indicator displays and OMNICOMM Online, the cloud-based fleet management platform with advanced fuel analytics.



01

**Omnicomm  
Online**

02

**Omnicomm  
on-board terminal**

03

**Omnicomm LLS  
fuel-level sensor**

# POWERFUL BENEFITS

---



## Branding

OMNICOMM’s fleet management solutions can be sold to customers under the MNO’s own branding. Together with OMNICOMM, MNOs can extend existing mass market fleet management solutions to reach heavy industry customers, offering professional on-board terminals, best-on-the-market fuel management sensors and advanced fuel management software.

---



## Range of solutions from a single supplier

OMNICOMM products have been created for all market segments, from small fleets to industry giants working in extreme conditions. Offer customers a customized fleet management solution, covering vehicles and assets ranging from light commercial vehicles to trucks, heavy machinery, mining equipment and trains.

---



## Flexibility

OMNICOMM provides flexible solutions to suit the specific needs of MNOs. An MNO that just needs hardware can integrate OMNICOMM devices with existing software platforms, but OMNICOMM also provides complete fleet management solutions for total replacement/upgrade of existing value-added service offerings.

---



## Offer fuel management solutions

OMNICOMM's high-precision fuel-level sensors measure fuel levels and provide fuel data with over 99.2% accuracy. Our best-in-class data smoothing/filtration algorithm filters out 'noise' and delivers meaningful data. With the most advanced fuel analytics on the market, OMNICOMM makes your fleet management offer more competitive.



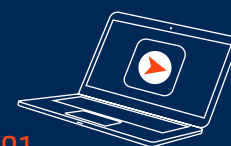
## Actionable data

OMNICOMM components provide detailed, actionable data to help operators accurately assess fuel levels, monitor vehicle assets in real time, optimize routes and manage labor and fuel costs. MODBUS protocol support enables connection to non-OMNICOMM sensors to collect data such as temperature, tire pressure and passenger flow.



## Support

OMNICOMM offers lifetime partner support, high levels of customer support, and strong technical training resources. OMNICOMM is a market-proven expert in fuel management that works with partners to provide complex solutions that support a wide variety of customers, enabling them to save millions of dollars annually.



01

Omicomm  
Online



02

Omicomm  
on-board terminal



03

Omicomm LLS  
fuel-level sensor

# SOLUTION COMPONENTS

---



## OMNICOMM Online:

A cloud-based SaaS fuel and fleet management solution that includes instant alerts for specified driver behaviors and vehicle safety issues, real-time fuel-level monitoring and access to historical and real-time information any time operators are online – including on mobile.



## OMNICOMM on-board terminal:

Compatible with both GPS and GLONASS, OMNICOMM offers a range of on-board terminals for different scenarios, including the OMNICOMM OKO video surveillance-enabled option. On-board terminals collect data from various sensors and the vehicle's on-board computer and send it to the fleet management system for processing.



## OMNICOMM LLS fuel-level sensor:

The industry's most reliable high-precision capacitive fuel-level sensors, including explosion-proof option. OMNICOMM sensors have the highest possible ingress protection rating, enabling operation in the most extreme conditions.

# MEASURE KEY PARAMETERS:

---

- Fuel consumption
- Fuel levels
- Fuel density
- Speed
- Idling
- Driving direction
- Coordinates
- Engine RPMs
- Harsh braking and acceleration
- Hard maneuvers
- Engine temperature
- On-board voltage
- Tire pressure
- Seatbelt
- Headlights
- Equipment working modes
- Vehicle outside geofences

**Want to see how OMNICOMM can work for you?  
SCHEDULE A DEMO WITH ONE OF OUR LOCAL PARTNERS TODAY.**

[www.omnicomm-world.com](http://www.omnicomm-world.com)  
[info@omnicomm-world.com](mailto:info@omnicomm-world.com)